



EVO
DEVO
SIG
NET

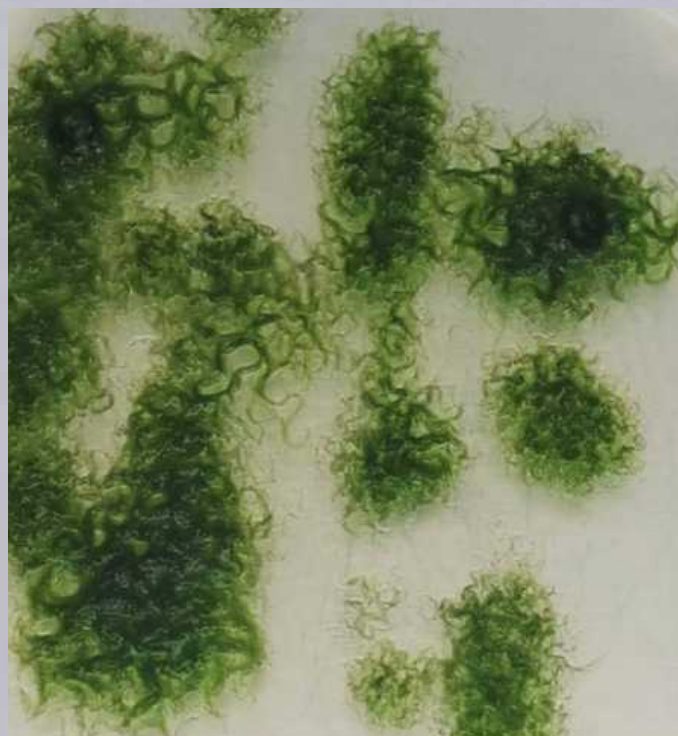
Spanish Network on Evolution of regulatory mechanisms in plant Development and Signaling

2024
Calendar

January

mon	tue	wed	thu	fri	sat	sun
1	2	3	4	5	6	7
8	9	10	11	12	13	14
15	16	17	18	19	20	21
22	23	24	25	26	27	28
29	30	31				

Green algae *Zygnema*
Unbranched filaments with cylindrical cells, each containing 2 green star-shaped axial chloroplasts
(provided by Francisco Romero-Campero)



Antonio José de Cavanilles (born on January 16th, 1745)

He traveled through part of the Iberian Peninsula classifying and inventorying the native flora, and in the course of such research, he discovered many new species

Theodosius Dobzhansky (born on January 25th, 1900)

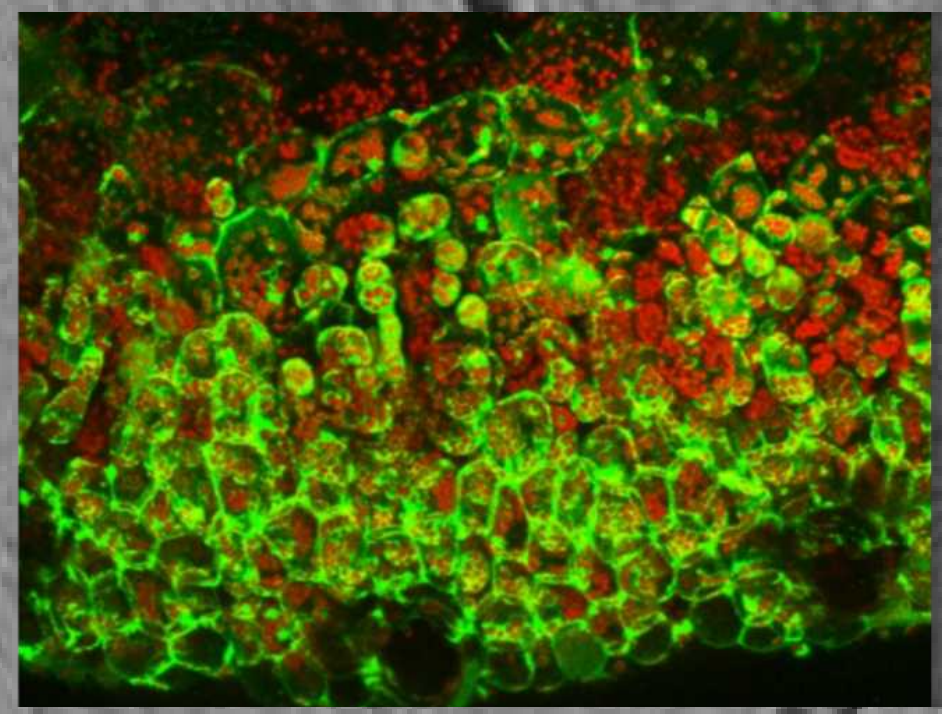
“Nothing in Biology Makes Sense Except in the Light of Evolution“



Marchantia polymorpha growing on agar plate (provided by Francisco Romero-Campero, IBVF)

February

mon	tue	wed	thu	fri	sat	sun
			1	2	3	4
5	6	7	8	9	10	11
12	13	14	15	16	17	18
19	20	21	22	23	24	25
26	27	28	29			



Confocal microscopy cross section of *Marchantia polymorpha* showing that TMV-GFP virus infects all cell types (provided by Ignacio Rubio-Somoza, CRAG)

Charles Darwin (born on February 12th, 1809)
"It is not the strongest of the species that survives, nor the most intelligent that survives. It is the one that is the most adaptable to change"

Kono Yasui (Born on February 16th, 1880)
She was a pioneering botanist that broke down Japan's gender barriers

March

Ferns and mosses (provided by Myriam Calonje, IBVF)

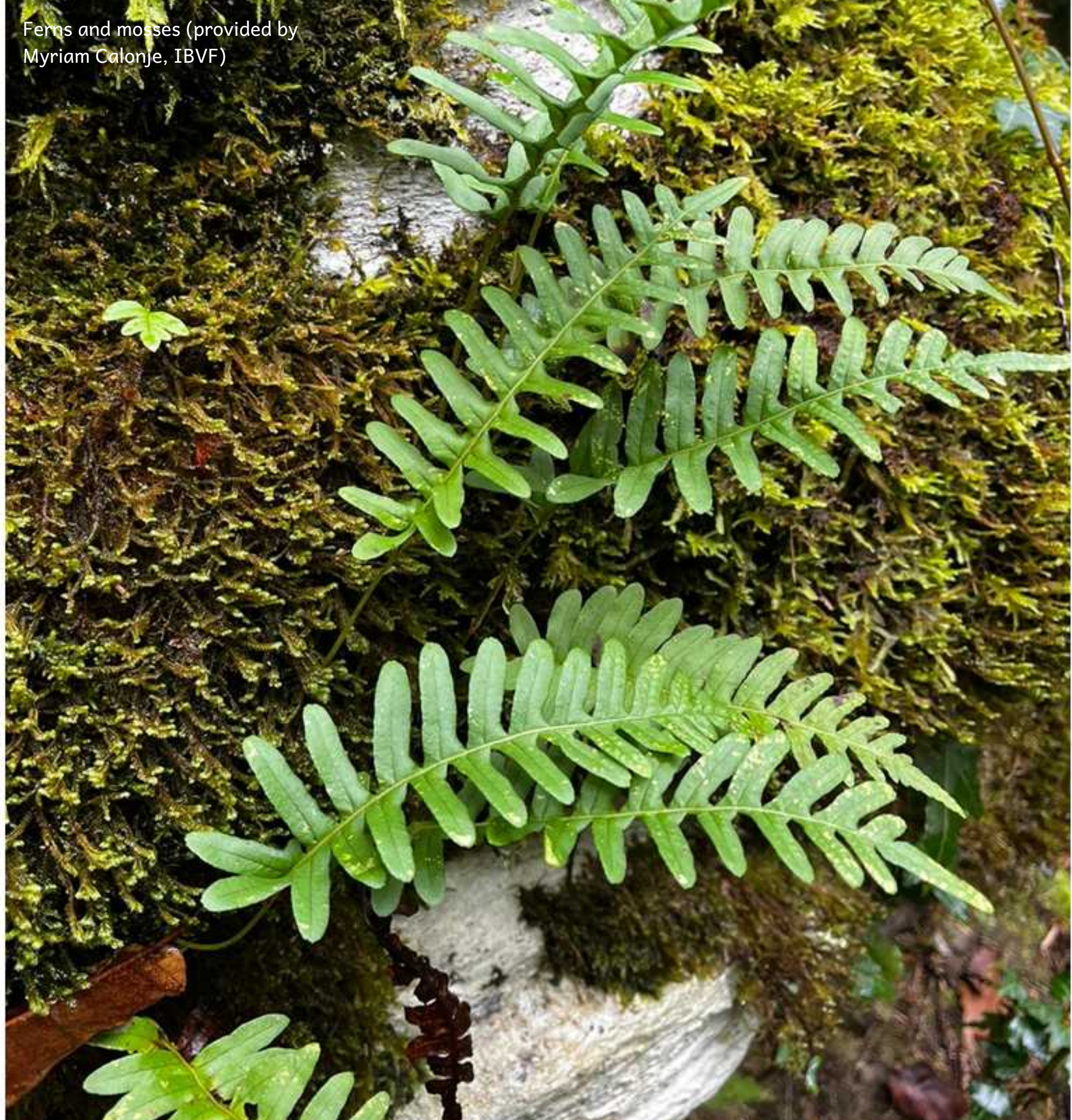
mon	tue	wed	thu	fri	sat	sun
				1	2	3
4	5	6	7	8	9	10
11	12	13	14	15	16	17
18	19	20	21	22	23	24
25	26	27	28	29	30	31

Lynn Margulis (born on March 5th, 1938)

“not only does the environment affect organisms, but organisms also affect the environment”

Mary E. Clutter (born on March 29th, 1930)

Among her most ambitious initiatives was the Multinational Coordinated *Arabidopsis thaliana* Genome Research Project



Cucumis melo tendril (provided by Francisco Romero-Campero, IBVF)

April



mon	tue	wed	thu	fri	sat	sun
1	2	3	4	5	6	7
8	9	10	11	12	13	14
15	16	17	18	19	20	21
22	23	24	25	26	27	28
29	30					



Cucumis melo plants (provided by Francisco Romero-Campero, IBVF)

Katherine Esau (born on April 3rd, 1898)

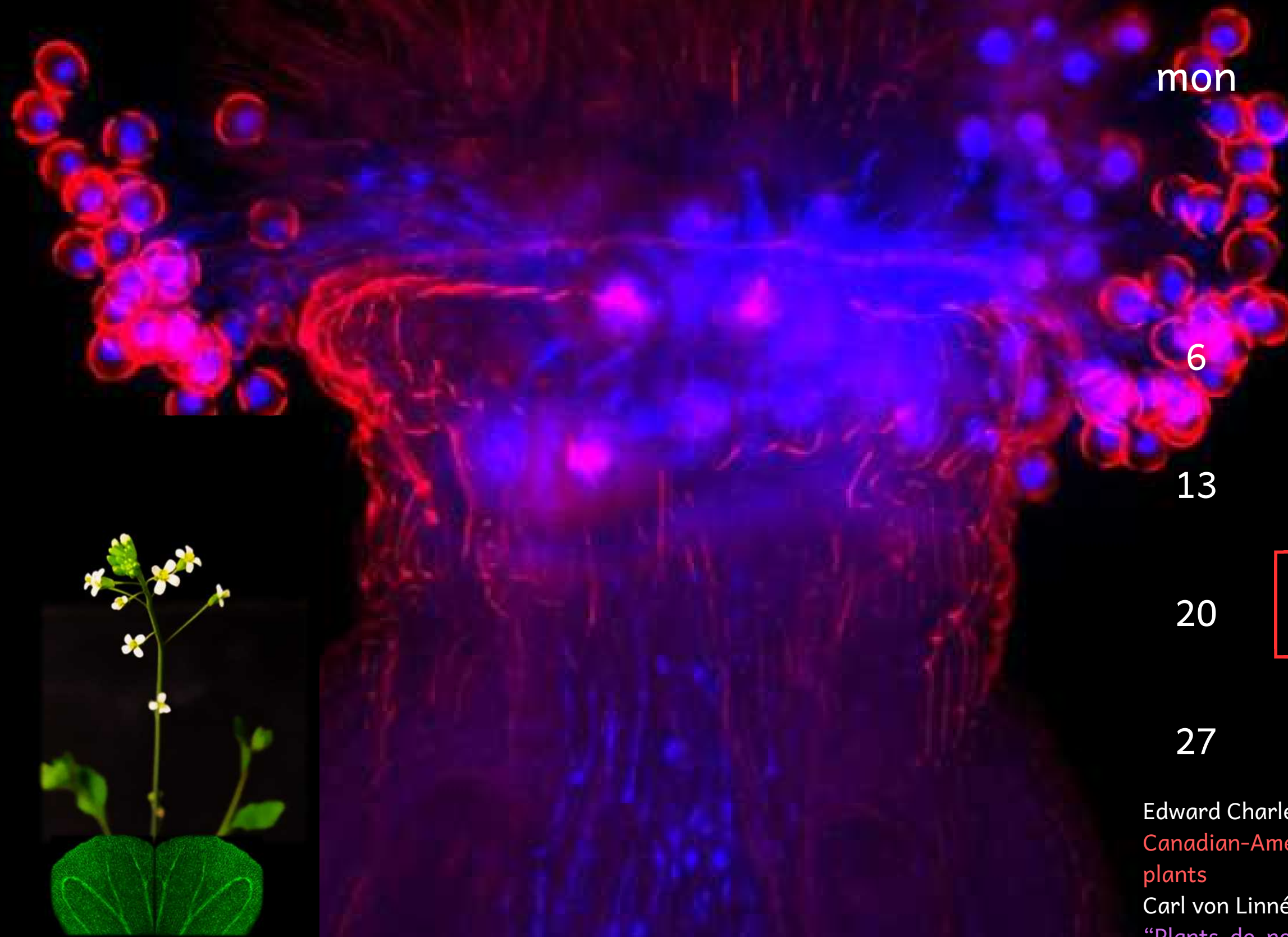
She was a pioneering German-American botanist who studied plant anatomy and the effects of viruses

José Celestino Mutis (born on April 6th, 1732)

Botanist who initiated one of the most important periods of botanical exploration in Spain. His "Flora de Bogotá o de Nueva Granada", contains more than 6,000 illustrations

Arabidopsis thaliana stigma four hours after pollination (provided by Javier Pérez-Hormaeche and Federico Valverde, IBVF)

May



mon	tue	wed	thu	fri	sat	sun
		1	2	3	4	5
6	7	8	9	10	11	12
13	14	15	16	17	18	19
20	21	22	23	24	25	26
27	28	29	30	31		



Arabidopsis thaliana *co-10* mutant flowers and *COprom::GFP* expression in petals (provided by Gloria Serrano, IBVF)

Edward Charles Jeffrey (born on May 21st, 1866)
Canadian-American botanist who worked on the morphology and phylogeny of vascular plants

Carl von Linné (born on May 23rd, 1707)
“Plants do not follow a determined route; they have divergent paths and different behaviors”

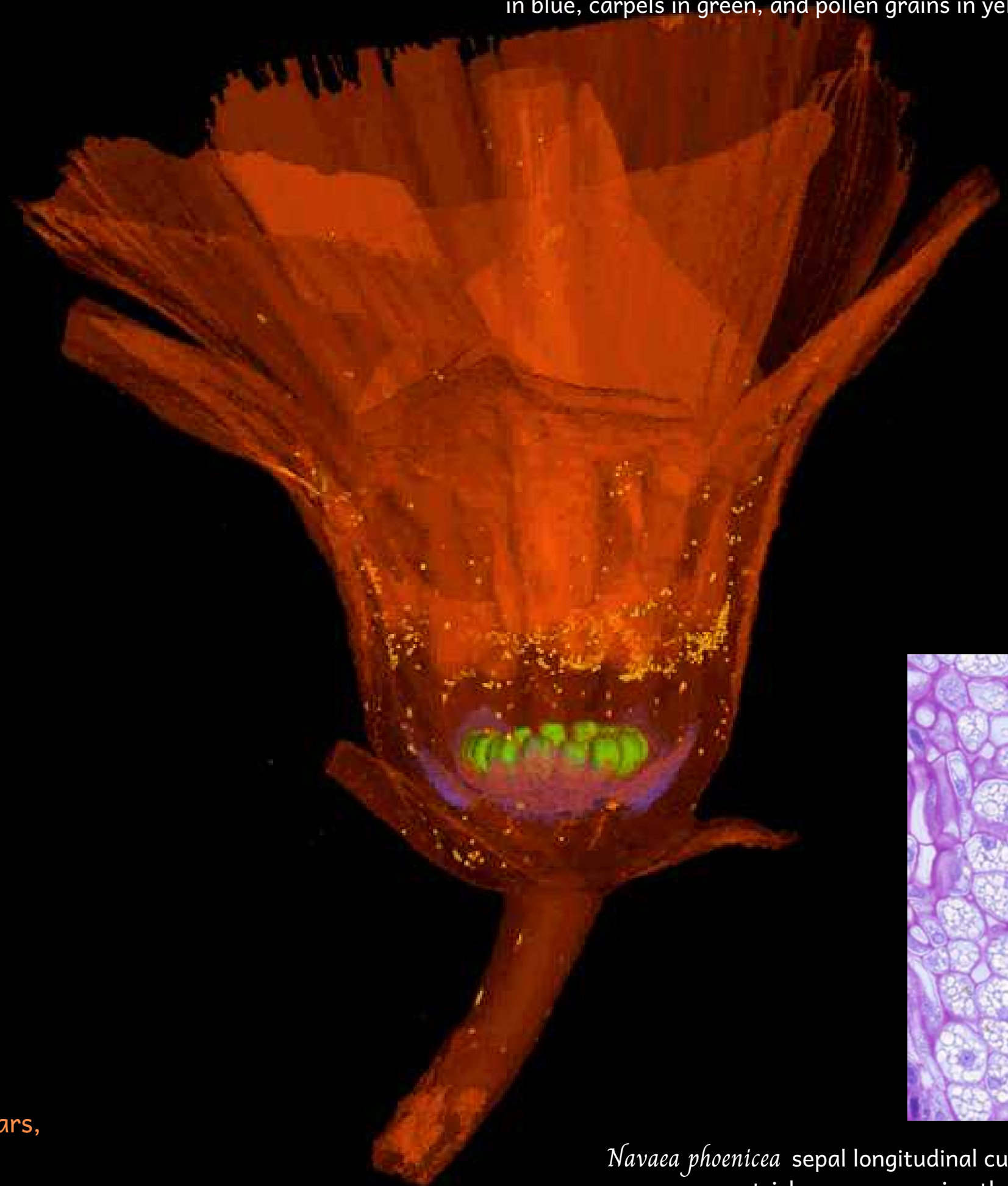
June

mon	tue	wed	thu	fri	sat	sun
					1	2
3	4	5	6	7	8	9
10	11	12	13	14	15	16
17	18	19	20	21	22	23
24	25	26	27	28	29	30

Barbara McClintock (born on June 16th, 1902)

“It might seem unfair to reward a person for having so much pleasure over the years, asking the maize plant to solve specific problems and then watching its responses”

Navaea phoenicea flower showing petals in orange, sepal nectaries in blue, carpels in green, and pollen grains in yellow (provided by Javier Fuertes Aguilar, RJB)



Navaea phoenicea sepal longitudinal cut showing the secretory trichomes composing the nectaries (provided by Javier Fuertes Aguilar, RJB)



July

mon	tue	wed	thu	fri	sat	sun
1	2	3	4	5	6	7
8	9	10	11	12	13	14
15	16	17	18	19	20	21
22	23	24	25	26	27	28
29	30	31				

Gregor Mendel (born on July 20th, 1822)
He discovered the missing component of Darwin's evolutionary theory, the genetic mechanism of trait inheritance

August

mon	tue	wed	thu	fri	sat	sun
			1	2	3	4
5	6	7	8	9	10	11
12	13	14	15	16	17	18
19	20	21	22	23	24	25
26	27	28	29	30	31	

Blanca Catalán de Ocón y Gayolá (born on August 22nd, 1860)

She is considered the first Spanish female botanist

Johann Wolfgang von Goethe (born on August 28th, 1749)

"from top to bottom a plant is all leaf, united so inseparably with the future bud that one cannot be imagined without the other"

Brassica rapa var *fast* with *Eristalis tenax*
(provided by Silvia Matesanz, URJC)



September



mon	tue	wed	thu	fri	sat	sun
						1
2	3	4	5	6	7	8
9	10	11	12	13	14	15
16	17	18	19	20	21	22
23	24	25	26	27	28	29
30						

Alexander von Humboldt (born on September 14th, 1769)
Studying plants and their interactions with their surroundings led him to discover many more ideas that are integral to our work today

October

mon	tue	wed	thu	fri	sat	sun
	1	2	3	4	5	6
7	8	9	10	11	12	13
14	15	16	17	18	19	20
21	22	23	24	25	26	27
28	29	30	31			

Elizabeth Coleman White (born on October 5th, 1871)

She was the first person to grow cultivated blueberries for commercial production by selecting different traits in hybrids, including taste, color, shape, and how long it took to ripen

Edith Rebecca Saunders, (born on October 14th, 1865)

Known for her contributions to the understanding of trait inheritance in plants and for her insights on flower anatomy



Couroupita guianensis flower (provided by Myriam Calonje, IBVF)



Lysimachia monelli (shrubby pimpernel) is a flower color polymorphic species in which orange flowers contain pelargonidin, an uncommon anthocyanin pigment present in insect-pollinated flowers (provided by Eduardo Narbona, UPO)

November

mon	tue	wed	thu	fri	sat	sun
				1	2	3
4	5	6	7	8	9	10
11	12	13	14	15	16	17
18	19	20	21	22	23	24
25	26	27	28	29	30	

Janaki Ammal (born on November 4th, 1897)

Her work on sugarcane cross-breeding resulting in the sweetest sugarcane variety in the world

Marc Van Montagu (born on November 10th, 1933)

He described the gene transfer mechanism between *Agrobacterium* and plants, which resulted in the development of crucial methods for plant research



Sweet potato sprouting (provided by Pablo Muñoz-Rodríguez, UCM)

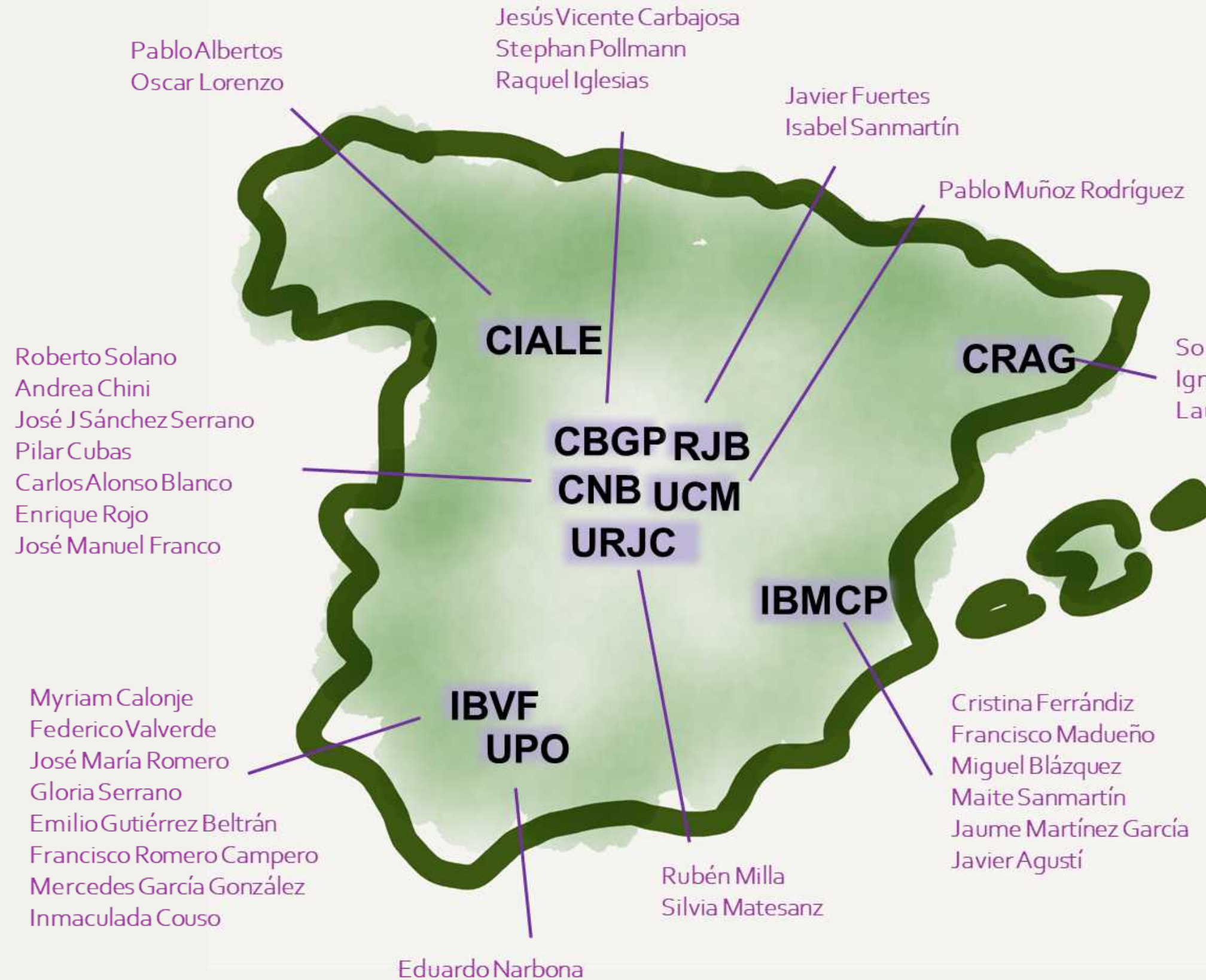
December

mon	tue	wed	thu	fri	sat	sun
						1
2	3	4	5	6	7	8
9	10	11	12	13	14	15
16	17	18	19	20	21	22
23	24	25	26	27	28	29
30	31					

Alessandro Minelli (born on December 20th, 1948)
 He is known for his studies in evolutionary developmental biology, or evo-devo

Robert Brown (born December 21st, 1773)
 He contributed substantially to the knowledge of plant morphology, embryology, and biogeography

Network Research Groups



EvoDevoSigNet is a network of Spanish researchers working in different aspects of Plant Biology with a common interest in learning about the evolution of developmental processes and signaling mechanisms in plants.

We aim to understand how plants have evolved to generate the diversity of forms, shapes, organs... and the ability to respond to challenges posed by the changing environment or by pathogens, predators, or even the interaction with other beneficial organisms.

We intend to combine basic research, pure curiosity and ambition to learn how evolution has modeled the vegetal world as we know it, with the biotechnological and translational perspective that derives from the understanding of the general and the particular in development processes, obtained through comparative studies in diverse taxonomic groups.

Finally, we have the goal of reaching wider audiences, both in the scientific community and nonacademic and general public, to make more popular and enjoyable for all the beauty of plant biology and evolution.

EvoDevoSigNet has, therefore, ambitious and clearly defined scientific, strategic and dissemination objectives focused on an emergent but yet not fully implemented field of research. With this action, funded by Spanish Science bodies, we hope to reach these goals and to generate a positive impact for Plant Research in Spain.



AGENCIA ESTATAL DE INVESTIGACIÓN -
 Convocatoria 2022 «Redes de
 Investigación»

Grant RED2022-134917-T funded by
 MCIN/AEI/ 10.13039/501100011033